

Welcome to the AccessibilityOnline Webinar Series



A collaborative program between the ADA National Network and the US Access Board



The Session is Scheduled to begin at 2:30pm Eastern Time
We will be testing sound quality periodically

The content and materials of this training are property of the US Access Board and the DBTAC - Great Lakes ADA Center and cannot be used and/or distributed without permission. This program is funded under award #H133A060097 from the U.S. Department of Education through the auspices of the National Institute on Disability and Rehabilitation Research (NIDRR) and an inter-agency agreement with the U.S. Access Board. For permission to use training content or obtain copies of materials used as part of this program please contact us by email at adata@adagreatlakes.org or toll free (877)232-1990 (V/TTY)

www.AccessibilityOnline.org

(877) 232-1990(V/TTY)

Parking and Passenger Loading

Session Agenda

- Parking
- Van Parking
- Passenger Loading Zones

UNITED STATES ACCESS BOARD

2

Current ADA Standards



DOJ's original standards (1994) still in effect



Transportation Facilities: updated DOT standards (2006)



UNITED STATES ACCESS BOARD

3

Current ABA Standards

(Federal facilities)



Updated standards in effect for all facilities except housing (DOD housing covered)



Housing – UFAS still applies (HUD to update standards)

UNITED STATES ACCESS BOARD

4

Online Guidance



www.access-board.gov/ada-aba/guide.htm

UNITED STATES ACCESS BOARD

5

New Construction

Access Required

- Parking is not required to be provided
- Where parking is provided, it must include accessible parking spaces
- Excludes commercial vehicle storage, law enforcement vehicles, or vehicle impound parking *

UNITED STATES ACCESS BOARD

6

Accessible Parking Scoping

- Where visitor, patron, or employee parking is provided
- Calculated on a facility by facility basis *
- A facility can be a single space, a parking lot, a parking floor within a building, or a stand alone parking structure

UNITED STATES ACCESS BOARD

7

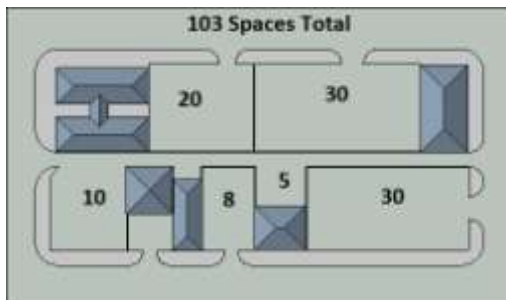
Accessible Parking Scoping

208.2 Parking Spaces	
Total Number of Parking Spaces Provided in Parking Facility	Minimum Number of Required accessible Parking Spaces
1 to 25	1
26 to 50	2
51 to 75	3
76 to 100	4
101 to 150	5
151 to 200	6
201 to 300	7
301 to 400	8
401 to 500	9
501 to 1000	2 percent of total
1001 and over	20, plus 1 for each 100, or fraction thereof, over 1000

UNITED STATES ACCESS BOARD

8

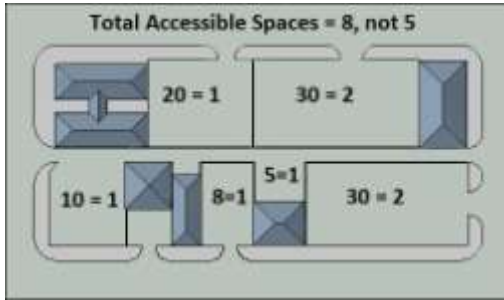
Accessible Parking Scoping



UNITED STATES ACCESS BOARD

9

Accessible Parking Scoping



UNITED STATES ACCESS BOARD

10

Accessible Parking Scoping

Related "Medical" Facilities

- Hospital: 10 % of spaces
- Rehabilitation and Outpatient
Physical Therapy Facilities: 20 %
- Doctor's Offices: use table
- Medical Equipment Facilities: use table
- Use Zoning requirements to allocate %

UNITED STATES ACCESS BOARD

11

Accessible Parking Scoping

Residential Facilities *

- Resident Parking: one space for each required accessible dwelling unit
- Additional Resident Parking (where parking exceeds a 1 to 1 ratio): 2 % of additional parking
- Non-Resident Parking: use table

UNITED STATES ACCESS BOARD

12

Accessible Parking Scoping

Van Accessible Spaces

- 1 van space for every 6 accessible spaces required *
- There will always be at least one van space required

UNITED STATES ACCESS BOARD

13

Accessible Parking Scoping

Location of Parking Space

- On shortest accessible route to accessible entrance
- On shortest accessible route to entrance to parking facility
- Dispersed to multiple accessible entrances

UNITED STATES ACCESS BOARD

14

Accessible Parking Scoping

Location of Parking Space

- Exception for vans in multi-level parking structures
- Exception allows placement in a different location if “substantially greater or equivalent accessibility is provided”

UNITED STATES ACCESS BOARD

15



UNITED STATES ACCESS BOARD

16

Accessible Parking Scoping

Location of Parking Space

Residential facilities: *

- Spaces must be provided on shortest accessible route to the dwelling unit they serve
- Required to be dispersed through all types of parking provided to residents (lots, carports, etc.)

UNITED STATES ACCESS BOARD

17

Alterations

Standards apply based on:

- Planned scope of work
- Technical feasibility
- Primary function areas/path of travel

UNITED STATES ACCESS BOARD

18

Alterations

“Technical Infeasibility” =
Existing physical/site constraints that prohibit compliance

Example: removing parking space to create van access aisle conflicting with minimum zoning requirements

UNITED STATES ACCESS BOARD

19

Alterations



Where renovation is more extensive,
Technical Infeasibility is less likely

UNITED STATES ACCESS BOARD

20

Alterations

Technical Infeasibility

- Determined case-by-case
- Based on existing constraints/conditions and scope of work
- Compliance required to the *maximum extent feasible*

UNITED STATES ACCESS BOARD

21

Parking Spaces

Technical Requirements

UNITED STATES ACCESS BOARD

22

Vehicle Space

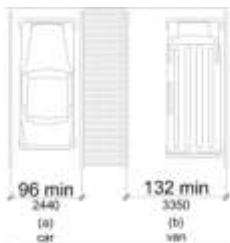


Figure 502.2
Vehicle Parking Space

Measurement taken to Center Line of marked lines *

UNITED STATES ACCESS BOARD

23

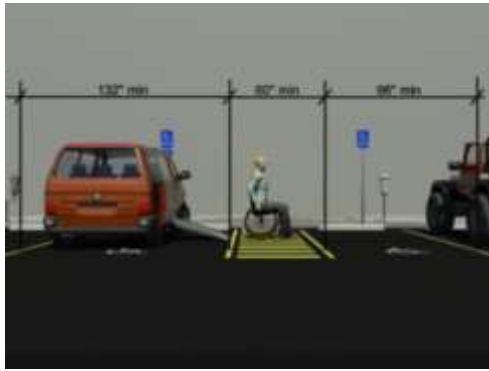
Access Aisle



Figure 502.3
Parking Space Access Aisle

UNITED STATES ACCESS BOARD

24



UNITED STATES ACCESS BOARD

25

Access Aisle Markings

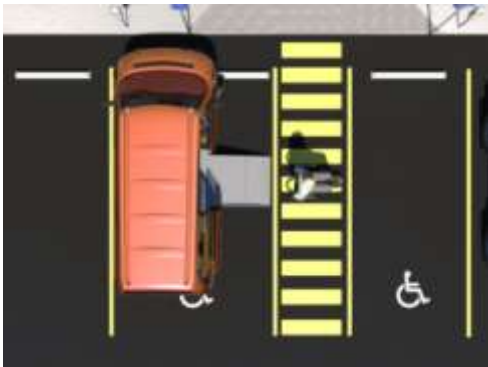
Guidelines Require

“marked so as to discourage parking in them” *

Specific requirements may be a function of local code for regulating parking

UNITED STATES ACCESS BOARD

26



UNITED STATES ACCESS BOARD

27

Access Aisle

- Cannot overlap vehicle way
- Can be shared by two vehicle spaces
- Can be on either side of vehicle space except where angled parking is provided which requires the aisle on the passenger side of van spaces

UNITED STATES ACCESS BOARD

28

Van Access Aisle

Recommendation: Provide access aisle for vans on the passenger side so that drivers do not have to back into the space



UNITED STATES ACCESS BOARD

29

Vertical Clearance for Vans



UNITED STATES ACCESS BOARD

30

Vehicle Overhang



UNITED STATES ACCESS BOARD

31

Parking Meters



UNITED STATES ACCESS BOARD

32

Parking Space Signs

- International Symbol of Access required to designate and reserve accessible spaces
- 60 inches minimum to bottom of sign *
- "Van Accessible" added for van spaces
- Exception: sign not required where 4 or fewer spaces are provided *



Van Accessible

UNITED STATES ACCESS BOARD

33



UNITED STATES ACCESS BOARD

34



UNITED STATES ACCESS BOARD

35



UNITED STATES ACCESS BOARD

36

Questions?

UNITED STATES ACCESS BOARD

37

New Construction

Accessible Passenger Loading Zone Scoping

- At least one entrance to medical care & long term care facilities
- Valet parking facilities
- Mechanical access parking garage vehicle drop-off & pick-up areas *

UNITED STATES ACCESS BOARD

38

New Construction

Accessible Passenger Loading Zone Scoping cont.

- For all other facility types: Where Provided
- Requires one accessible zone for every 100 linear feet of loading zone space *

UNITED STATES ACCESS BOARD

39



UNITED STATES ACCESS BOARD

43

Vertical Clearance



UNITED STATES ACCESS BOARD

44

Questions?

UNITED STATES ACCESS BOARD

45
